



Tests [Edit Test](#)

[Tests](#) [Groups](#) [Links](#)

Primary 6 Math (Term 4) - Red Swastika (Y0)

[Add Questions](#)

[Assign](#)

[Settings](#)

[Review](#)

[Duplicate](#)

[Print](#)

[Delete](#)

[▶ Preview Test](#)

[↶ Assign Test](#)

Test Introduction

[+ Add Introduction](#)

59 Questions (55 Points)

Question Bank: 12,655 Questions

Test Questions

0 Test Assignments

Question 1

Primary 6 Math » Primary 6 Math (Prelim)

1 pt

Which of the following is eight hundred and two thousand and seven in figures?

- A. 80 207
- ✓ B. 802 007
- C. 820 007
- D. 8 002 007

Question Type: Multiple Choice
Randomize Answers: No
Date Added: Thu 21st Oct 2021
Last Modified: N/A
QID#: 29,409,308

[↗ Answers](#) | [✎ Edit](#) | [📄 Duplicate](#) | [📌 Used In](#) | [↕ Reorder](#)

[Remove From Test](#)

Question 2

Primary 6 Math » Primary 6 Math (Prelim)

1 pt

Express 5004g as kg and g

- A. 5kg 4g



- B. 5kg 40g
- C. 50kg 4g
- D. 50kg 40g

Question Type: Multiple Choice
Randomize Answers: No
Date Added: Thu 21st Oct 2021
Last Modified: N/A
QID#: 29,409,314

[Answers](#) | [Edit](#) | [Duplicate](#) | [Used In](#) | [Reorder](#)

[Remove From Test](#)

Question 3

Primary 6 Math » Primary 6 Math (Prelim)

1 pt

Which of the following is the smallest?

- A. 8.27
- B. 8.72
- C. 8.207
- D. 8.702

Question Type: Multiple Choice
Randomize Answers: No
Date Added: Thu 21st Oct 2021
Last Modified: N/A
QID#: 29,409,319

[Answers](#) | [Edit](#) | [Duplicate](#) | [Used In](#) | [Reorder](#)

[Remove From Test](#)

Question 4

Primary 6 Math » Primary 6 Math (Prelim)

1 pt

Which of the following is equivalent to $\frac{15}{20}$?

- A. $\frac{9}{16}$
- B.

$$\frac{10}{15}$$

C.

$$\frac{9}{15}$$

✓ D.

$$\frac{9}{12}$$

Question Type: Multiple Choice
Randomize Answers: No
Date Added: Thu 21st Oct 2021
Last Modified: N/A
QID#: 29,409,330

[↗ Answers](#) | [✎ Edit](#) | [📄 Duplicate](#) | [📌 Used In](#) | [↕ Reorder](#)

[Remove From Test](#)

Question 5

Primary 6 Math » Primary 6 Math (Prelim)

1 pt

The radius of a circle is 10cm. Find the circumference of the circle. Take pi=3.14

A. 31.4cm

✓ B. 62.8cm

C. 78.5cm

D. 314cm

Question Type: Multiple Choice
Randomize Answers: No
Date Added: Thu 21st Oct 2021
Last Modified: N/A
QID#: 29,409,335

[↗ Answers](#) | [✎ Edit](#) | [📄 Duplicate](#) | [📌 Used In](#) | [↕ Reorder](#)

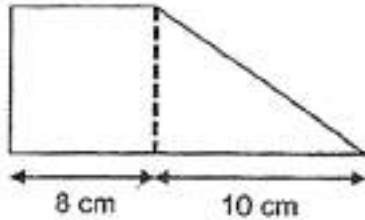
[Remove From Test](#)

Question 6

Primary 6 Math » Primary 6 Math (Prelim)

1 pt

The figure is made up of a square and a right-angled triangle. Find the area of the figure.



- A. 72cm²
- ✓ B. 104cm²
- C. 114cm²
- D. 144cm²

Question Type: Multiple Choice
Randomize Answers: No
Date Added: Thu 21st Oct 2021
Last Modified: N/A
QID#: 29,409,340

[Answers](#) | [Edit](#) | [Duplicate](#) | [Used In](#) | [Reorder](#)

[Remove From Test](#)

Question 7

Primary 6 Math » Primary 6 Math (Prelim)

1 pt

Which letter below is **not** symmetrical?

T O W N

- A. T
- B. O
- C. W
- ✓ D. N

Question Type: Multiple Choice
Randomize Answers: No
Date Added: Thu 21st Oct 2021
Last Modified: N/A
QID#: 29,409,347

[Answers](#) | [Edit](#) | [Duplicate](#) | [Used In](#) | [Reorder](#)[Remove From Test](#)

Question 8

Primary 6 Math » Primary 6 Math (Prelim)

1 pt

What is the value of $2m + \frac{m-1}{10}$ when $m = 3$?

- A. 5.6
- B. 5.8
- ✓ C. 6.2
- D. 6.4

Question Type: Multiple Choice
Randomize Answers: No
Date Added: Thu 21st Oct 2021
Last Modified: N/A
QID#: 29,409,355

[Answers](#) | [Edit](#) | [Duplicate](#) | [Used In](#) | [Reorder](#)[Remove From Test](#)

Question 9

Primary 6 Math » Primary 6 Math (Prelim)

1 pt

The average of two numbers is 38. When a third number is added, the average of the the three numbers is 40. Find the third number.

- A. 39
- B. 42
- ✓ C. 44
- D. 82

Question Type: Multiple Choice
Randomize Answers: No
Date Added: Thu 21st Oct 2021
Last Modified: N/A
QID#: 29,409,364

[Answers](#) | [Edit](#) | [Duplicate](#) | [Used In](#) | [Reorder](#)[Remove From Test](#)

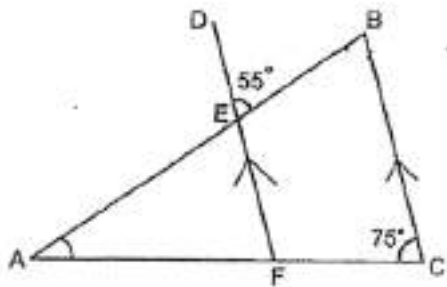
Question 10

Primary 6 Math » Primary 6 Math (Prelim)

1 pt

In the figure below, ABC is a triangle. $\angle DEB = 55^\circ$ and $\angle FCB = 75^\circ$.

BC is parallel to DF. Find $\angle EAF$.



- A. 20
- ✓ B. 50
- C. 55
- D. 75

Question Type: Multiple Choice
Randomize Answers: No
Date Added: Thu 21st Oct 2021
Last Modified: N/A
QID#: 29,409,374

[Answers](#) | [Edit](#) | [Duplicate](#) | [Used In](#) | [Reorder](#)

[Remove From Test](#)

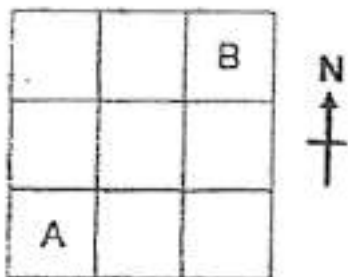
Question 11

Primary 6 Math » Primary 6 Math (Prelim)

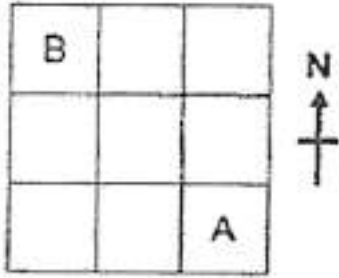
1 pt

Points A and B are drawn on square grid below. Which of the following shows A is south-west of B correctly?

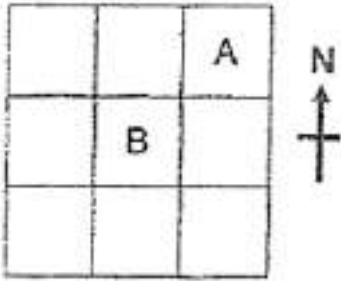
- ✓ A.



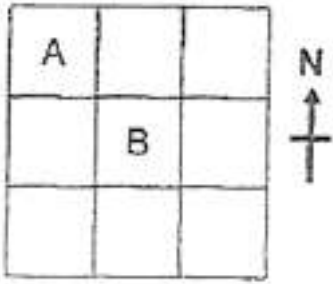
- B.



C.



D.



Question Type: Multiple Choice
Randomize Answers: No
Date Added: Thu 21st Oct 2021
Last Modified: N/A
QID#: 29,409,384

[↶ Answers](#) | [✎ Edit](#) | [📄 Duplicate](#) | [📌 Used In](#) | [⬇️ Reorder](#)

[Remove From Test](#)

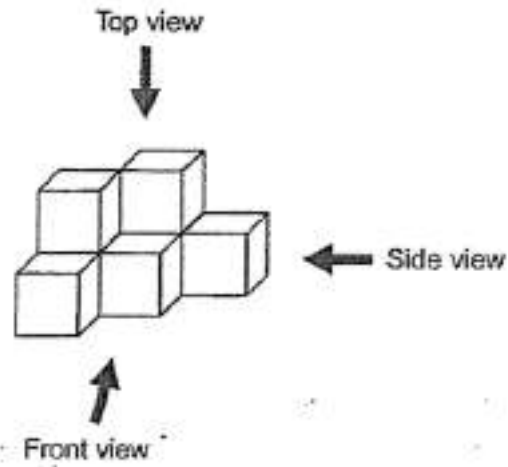
Question 12

Primary 6 Math » Primary 6 Math (Prelim)

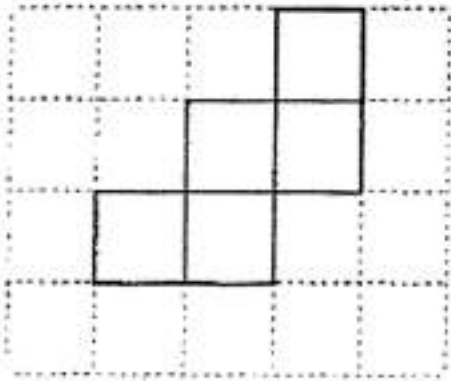
1 pt

The solid below is made of 7 cubes.

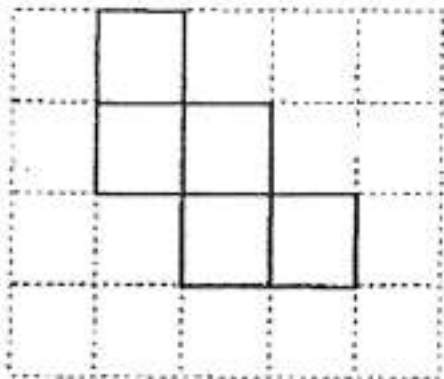
Which of the following shows the top view of the solid correctly ?



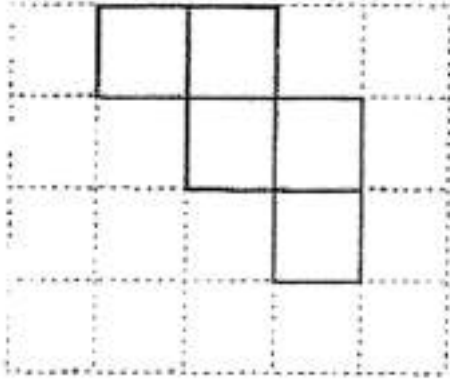
A.



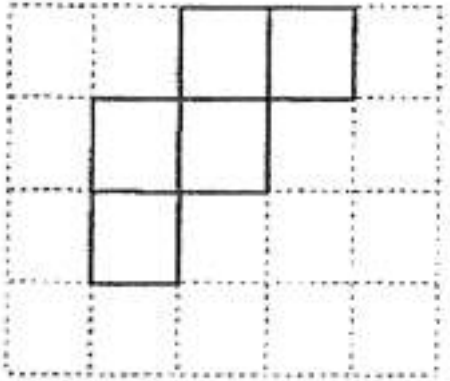
B.



C.



✓ D.



Question Type: Multiple Choice
Randomize Answers: No
Date Added: Thu 21st Oct 2021
Last Modified: N/A
QID#: 29,409,395

[Answers](#) | [Edit](#) | [Duplicate](#) | [Used In](#) | [Reorder](#)

[Remove From Test](#)

Question 13

Primary 6 Math » Primary 6 Math (Prelim)

1 pt

At a supermarket, 5 apples are sold at \$3.55. What is the price of 30 apples?

- A. \$17.75
- ✓ B. \$21.30
- C. \$106.50
- D. \$124.25

Question Type: Multiple Choice
Randomize Answers: No
Date Added: Thu 21st Oct 2021
Last Modified: N/A
QID#: 29,409,406

[Answers](#) | [Edit](#) | [Duplicate](#) | [Used In](#) | [Reorder](#)[Remove From Test](#)

Question 14

Primary 6 Math » Primary 6 Math (Prelim)

1 pt

A group of students was asked to vote for their favourite fruit from a list of 4 fruits. The table shows the number of students who voted for each fruit. How many type(s) of fruit(s) was/were voted as a favourite by more than 25% of the students?

Types of fruit	Apple	Banana	Orange	Pear
Number of students	30	18	10	22

- A. 1
- ✓ B. 2
- C. 3
- D. 4

Question Type: Multiple Choice
Randomize Answers: No
Date Added: Thu 21st Oct 2021
Last Modified: N/A
QID#: 29,409,409

[Answers](#) | [Edit](#) | [Duplicate](#) | [Used In](#) | [Reorder](#)[Remove From Test](#)

Question 15

Primary 6 Math » Primary 6 Math (Prelim)

1 pt

A number is the sum of all the factors of 14. Which of the following can be added to the number to change it to a multiple of 9?

- A. 5
- B. 8
- ✓ C. 3
- D. 4

Question Type: Multiple Choice
Randomize Answers: No
Date Added: Thu 21st Oct 2021
Last Modified: N/A
QID#: 29,409,415

[Answers](#) | [Edit](#) | [Duplicate](#) | [Used In](#) | [Reorder](#)[Remove From Test](#)

Question 16

Primary 6 Math » Primary 6 Math (Prelim)

1 pt

Find the value of 58×60

Accepted answers:

✓ 3480

Question Type: Free Text
Date Added: Thu 21st Oct 2021
Last Modified: N/A
QID#: 29,409,419

Correctly answered feedback

$58 \times 60 = 580 \times 6 = 3480$

Incorrectly answered feedback

$58 \times 60 = 580 \times 6 = 3480$

[Answers](#) | [Edit](#) | [Duplicate](#) | [Used In](#) | [Reorder](#)

[Remove From Test](#)

Question 17

Primary 6 Math » Primary 6 Math (Prelim)

1 pt

The table below shows the number of dollar notes that Kim has saved.
 Find the total amount of money Kim has saved.

Type of dollar notes	\$2	\$5	\$10
Number of dollar notes	4	5	1

Accepted answers:

✓ \$43

✓ \$ 43

✓ 43

Question Type: Free Text
Date Added: Thu 21st Oct 2021
Last Modified: N/A
QID#: 29,409,428

Correctly answered feedback

value \$2 -> $2 \times 4 = 8$
 value \$4 -> $5 \times 5 = 25$
 $10 + 25 + 8 + 35 = 43$

Incorrectly answered feedback

value \$2 -> $2 \times 4 = 8$
 value \$4 -> $5 \times 5 = 25$
 $10 + 25 + 8 + 35 = 43$

[Answers](#) | [Edit](#) | [Duplicate](#) | [Used In](#) | [Reorder](#)

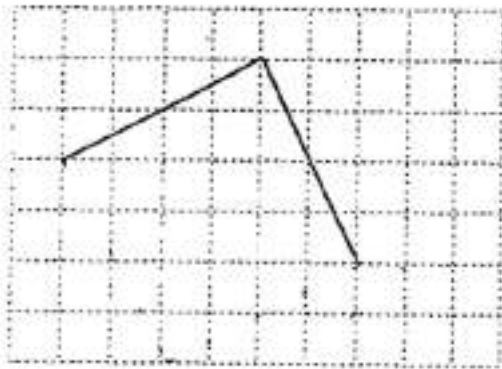
[Remove From Test](#)

Question 18

Primary 6 Math » Primary 6 Math (Prelim)

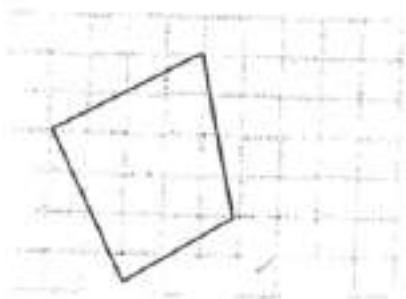
0 pts

On the grid below, draw two straight lines to complete a symmetrical figure.

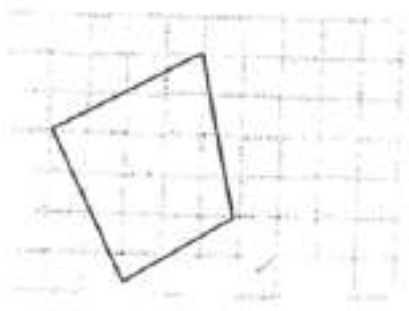


Question Type: Essay
Date Added: Thu 21st Oct 2021
Last Modified: Thu 21st Oct 2021
QID#: 29,409,433

Correctly answered feedback



Incorrectly answered feedback



[Answers](#) |
 [Edit](#) |
 [Duplicate](#) |
 [Used In](#) |
 [Reorder](#)

[Remove From Test](#)

Question 19

Primary 6 Math » Primary 6 Math (Prelim)

1 pt

A machine takes 5 minutes to make 3 boxes. With two such machines working at the same given rate, how many minutes would be needed to make 90 such boxes?

Accepted answers:

- ✓ 75min
- ✓ 75 min
- ✓ 75

Question Type: Free Text
Date Added: Thu 21st Oct 2021
Last Modified: N/A
QID#: 29,409,446

Correctly answered feedback

5min-> $3 \times 2 = 6$

sets of 5 min-> $90 \div 6 = 15$

total-> $15 \times 5 = 75$

Incorrectly answered feedback

5min-> $3 \times 2 = 6$

sets of 5 min-> $90 \div 6 = 15$

total-> $15 \times 5 = 75$

[Answers](#) |
 [Edit](#) |
 [Duplicate](#) |
 [Used In](#) |
 [Reorder](#)

[Remove From Test](#)

Question 20

Primary 6 Math » Primary 6 Math (Prelim)

1 pt

Find the value of
a) $8 \times 4 \div 2 - 1$

Accepted answers:

✓ 15

Question Type: Free Text
Date Added: Thu 21st Oct 2021
Last Modified: N/A
QID#: 29,409,452

Correctly answered feedback

$$8 \times 4 \div 2 - 1 = 16 - 1 = 15$$

Incorrectly answered feedback

$$8 \times 4 \div 2 - 1 = 16 - 1 = 15$$

↗ Answers | ✎ Edit | 📄 Duplicate | ↗ Used In | ⚙ Reorder

Remove From Test

Question 21

Primary 6 Math » Primary 6 Math (Prelim)

1 pt

b) $20 - (3 + 4 \times 2)$

Accepted answers:

✓ 9

Question Type: Free Text
Date Added: Thu 21st Oct 2021
Last Modified: N/A
QID#: 29,409,455

Correctly answered feedback

$$20 - (3 + 4 \times 2) = 20 - 1(3 + 8) = 20 - 11 = 9$$

Incorrectly answered feedback

$$20 - (3 + 4 \times 2) = 20 - 1(3 + 8) = 20 - 11 = 9$$

↗ Answers | ✎ Edit | 📄 Duplicate | ↗ Used In | ⚙ Reorder

Remove From Test

Question 22

Primary 6 Math » Primary 6 Math (Prelim)

1 pt

Find the value of $\frac{7}{4} + 2\frac{5}{6}$ as a mixed number in its simplest form.

Accepted answers:

✓ 4 7/12

Question Type: Free Text
Date Added: Thu 21st Oct 2021
Last Modified: N/A
QID#: 29,409,460

[Answers](#) | [Edit](#) | [Duplicate](#) | [Used In](#) | [Reorder](#)

[Remove From Test](#)

Question 23

Primary 6 Math » Primary 6 Math (Prelim)

1 pt

Water from a tap fills an empty tank at 600 ml per minute. At this rate, how much water is in the tank after 25 minutes? Express your answer in litres.

Accepted answers:

✓ 15l

✓ 15 l

✓ 15

Question Type: Free Text
Date Added: Thu 21st Oct 2021
Last Modified: N/A
QID#: 29,409,469

Correctly answered feedback

600x25=15000
15000ml=15l

Incorrectly answered feedback

600x25=15000
15000ml=15l

[Answers](#) | [Edit](#) | [Duplicate](#) | [Used In](#) | [Reorder](#)

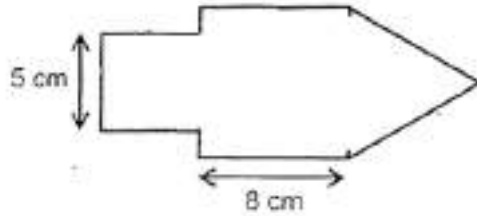
[Remove From Test](#)

Question 24

Primary 6 Math » Primary 6 Math (Prelim)

1 pt

The figure is made up of 2 squares and 1 equilateral triangle. Find the perimeter of the figure.



Accepted answers:

- ✓ 50cm
- ✓ 50 cm
- ✓ 50

Question Type: Free Text
Date Added: Thu 21st Oct 2021
Last Modified: N/A
QID#: 29,409,475

Correctly answered feedback

perimeter $\rightarrow 8+8+8+8+5+5+3 = (5 \times 8) + 5+5$
 $= 40+10=50$

Incorrectly answered feedback

perimeter $\rightarrow 8+8+8+8+5+5+3 = (5 \times 8) + 5+5$
 $= 40+10=50$

[Answers](#) | [Edit](#) | [Duplicate](#) | [Used In](#) | [Reorder](#)

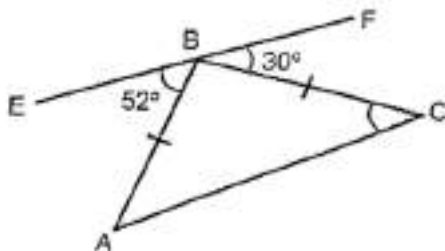
[Remove From Test](#)

Question 25

Primary 6 Math » Primary 6 Math (Prelim)

1 pt

In the figure below, ABC is an isosceles triangle, EBF is a straight line, $\angle ABE = 52^\circ$ and $\angle CBF = 30^\circ$. Find $\angle BCA$.



Accepted answers:

✓ 41

Question Type: Free Text
Date Added: Thu 21st Oct 2021
Last Modified: N/A
QID#: 29,409,483

Correctly answered feedback

180-52-30=98
180-98=82
82+2=41

Incorrectly answered feedback

180-52-30=98
180-98=82
82+2=41

[Answers](#) | [Edit](#) | [Duplicate](#) | [Used In](#) | [Reorder](#)

[Remove From Test](#)

Question 26

Primary 6 Math » Primary 6 Math (Prelim)

1 pt

The average of 2 numbers is 39. The average of another 3 numbers is 44. Find the total of these 5 numbers?

Accepted answers:

✓ 210

Question Type: Free Text
Date Added: Thu 21st Oct 2021
Last Modified: N/A
QID#: 29,409,490

Correctly answered feedback

39x2=78
44x3=132
132+78=210

Incorrectly answered feedback

39x2=78
44x3=132
132+78=210

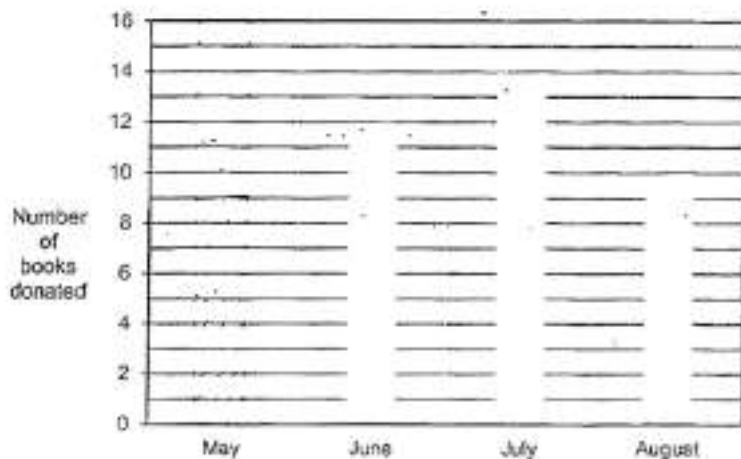
[Answers](#) | [Edit](#) | [Duplicate](#) | [Used In](#) | [Reorder](#)

[Remove From Test](#)

Question 27

Use the information below to answer Questions 27 and 28.

The bar graph below shows the number of books donated by a class from May to August. The number of books donated in May was $\frac{1}{5}$ of the total number of books donated during the 4 months.



Draw the bar for May in the graph.

Question Type: Essay

Date Added: Thu 21st Oct 2021

Last Modified: N/A

QID#: 29,409,495

Correctly answered feedback

$$12+14+10=36$$

$$36 \div 4 = 9$$

Incorrectly answered feedback

$$12+14+10=36$$

$$36 \div 4 = 9$$

[Answers](#) | [Edit](#) | [Duplicate](#) | [Used In](#) | [Reorder](#)

[Remove From Test](#)

Question 28

What fraction of the total number of books was donated in June?

Accepted answers:

✓ 4/15

Question Type: Free Text
Date Added: Thu 21st Oct 2021
Last Modified: N/A
QID#: 29,409,500

Correctly answered feedback

$$\frac{4}{5} \rightarrow 12 + 14 + 10 = 36$$

$$\frac{5}{5} \rightarrow \frac{36}{4} \times 5 = 45$$

$$\frac{12}{45} = \frac{4}{15}$$

Incorrectly answered feedback

$$\frac{4}{5} \rightarrow 12 + 14 + 10 = 36$$

$$\frac{5}{5} \rightarrow \frac{36}{4} \times 5 = 45$$

$$\frac{12}{45} = \frac{4}{15}$$

[Answers](#) | [Edit](#) | [Duplicate](#) | [Used In](#) | [Reorder](#)

[Remove From Test](#)

Question 29

Primary 6 Math » Primary 6 Math (Prelim)

1 pt

In a sale, each cup is sold at \$3a and each plate is sold at \$(a+4). Find the total price of 3 cups and 2 plates in terms of a. Express your answer in the simplest form.

Accepted answers:

- ✓ \$(11a+8)
- ✓ \$ (11a+8)
- ✓ \$ 11a+8

Question Type: Free Text
Date Added: Thu 21st Oct 2021
Last Modified: N/A
QID#: 29,409,514

Correctly answered feedback

3 cups -> 3ax3=9a
 2 plates -> (a+4) x2 = 2a+8

total $\rightarrow 9a+2a+8=11a+8$

Incorrectly answered feedback

3 cups $\rightarrow 3a \times 3 = 9a$

2 plates $\rightarrow (a+4) \times 2 = 2a+8$

total $\rightarrow 9a+2a+8=11a+8$

[Answers](#) | [Edit](#) | [Duplicate](#) | [Used In](#) | [Reorder](#)

[Remove From Test](#)

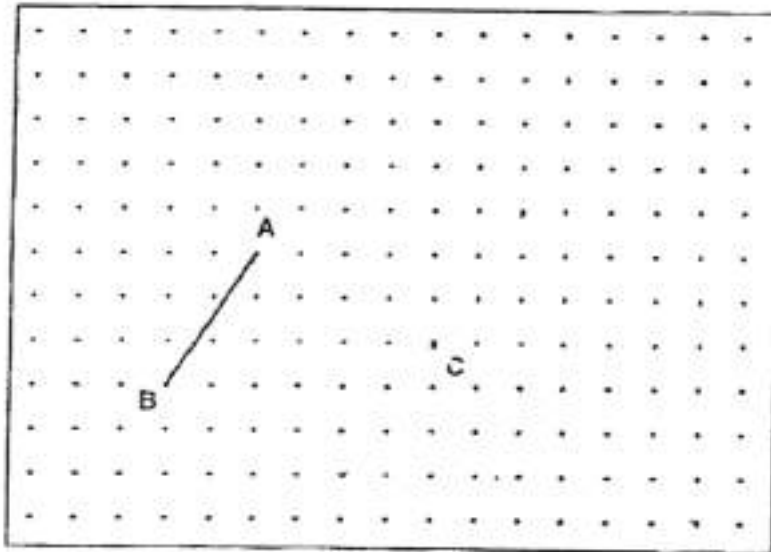
Question 30

Primary 6 Math » Primary 6 Math (Prelim)

0 pts

Using the grid and the given line AB, draw another straight line with the following characteristics:

- parallel to AB
- twice the length of AB
- passes through C which is marked by X on the grid as shown



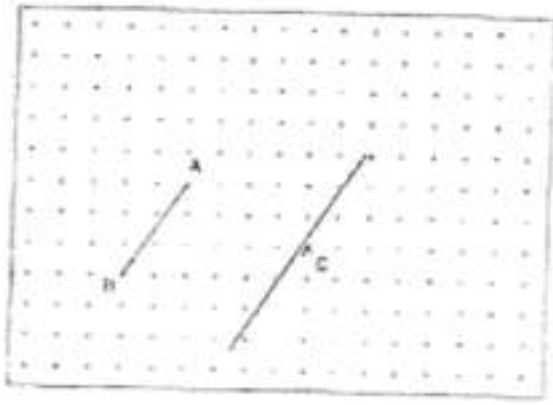
Question Type: Essay

Date Added: Thu 21st Oct 2021

Last Modified: Thu 21st Oct 2021

QID#: 29,409,520

Correctly answered feedback



[Answers](#) |
 [Edit](#) |
 [Duplicate](#) |
 [Used In](#) |
 [Reorder](#)

[Remove From Test](#)

Question 31

Primary 6 Math » Primary 6 Math (Prelim)

1 pt

The total of 2 numbers is 43.2 and their difference is 12.8. Find the smaller number

Accepted answers:

✓ 15.2

Question Type: Free Text

Date Added: Thu 21st Oct 2021

Last Modified: N/A

QID#: 29,409,636

Correctly answered feedback

small number $\times 2 \rightarrow 43.2 - 12.8 = 30.4$
small number $\rightarrow 15.2$

Incorrectly answered feedback

small number $\times 2 \rightarrow 43.2 - 12.8 = 30.4$
small number $\rightarrow 15.2$

[Answers](#) |
 [Edit](#) |
 [Duplicate](#) |
 [Used In](#) |
 [Reorder](#)

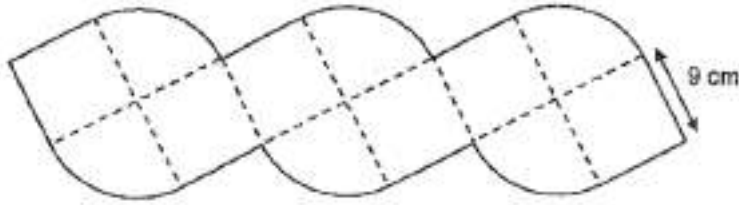
[Remove From Test](#)

Question 32

Primary 6 Math » Primary 6 Math (Prelim)

1 pt

The figure is made up similar quadrants and squares. Find the perimeter of the figure correct to 1 decimal place. Take $\pi = 3.14$.



Accepted answers:

- ✓ 156.8cm
- ✓ 156.8 cm
- ✓ 156.8

Question Type: Free Text
Date Added: Thu 21st Oct 2021
Last Modified: N/A
QID#: 29,409,640

[↗ Answers](#) | [✎ Edit](#) | [📄 Duplicate](#) | [↶ Used In](#) | [⬇ Reorder](#)

[Remove From Test](#)

Question 33

Primary 6 Math » Primary 6 Math (Prelim)

1 pt

Study the algebraic expressions that follow a pattern below.
 Find the value of w if Number 6 is 65.

Number 1	Number 2	Number 3	Number 6
$13w + 12$	$11w + 10$	$9w + 8$?

Accepted answers:

- ✓ 21

Question Type: Free Text
Date Added: Thu 21st Oct 2021
Last Modified: N/A
QID#: 29,409,651

Correctly answered feedback

$3w+2=65$
 $3w \rightarrow 65-2=63$
 $1w=21$

Incorrectly answered feedback

$3w+2=65$
 $3w \rightarrow 65-2=63$
 $1w=21$

[Answers](#) | [Edit](#) | [Duplicate](#) | [Used In](#) | [Reorder](#)

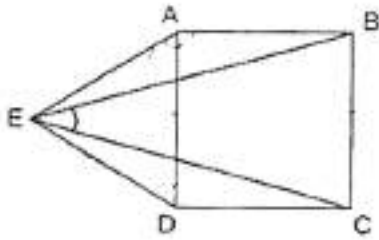
[Remove From Test](#)

Question 34

Primary 6 Math » Primary 6 Math (Prelim)

1 pt

In the figure below, ABCD is a square and ADE is an equilateral triangle.
Find $\angle BEC$.



Accepted answers:

✓ 30

Question Type: Free Text
Date Added: Thu 21st Oct 2021
Last Modified: N/A
QID#: 29,409,657

Correctly answered feedback

$AEB \rightarrow (180-90-60) \div 2 = 15$
 $BEC \rightarrow 60-15-15 = 30$

Incorrectly answered feedback

$AEB \rightarrow (180-90-60) \div 2 = 15$
 $BEC \rightarrow 60-15-15 = 30$

[Answers](#) | [Edit](#) | [Duplicate](#) | [Used In](#) | [Reorder](#)

[Remove From Test](#)

Question 35

Primary 6 Math » Primary 6 Math (Prelim)

1 pt

Devi had to fill as many jugs as possible with 10 ℓ of water. The capacity of each jug is $\frac{9}{16}$ ℓ.

(a) What was the most number of jugs that could be completely filled with water?

Accepted answers:

✓ 17

Question Type: Free Text
Date Added: Thu 21st Oct 2021
Last Modified: N/A
QID#: 29,409,661

[↗ Answers](#) | [✎ Edit](#) | [📄 Duplicate](#) | [📌 Used In](#) | [⬇️ Reorder](#)

[Remove From Test](#)

Question 36

Primary 6 Math » Primary 6 Math (Prelim)

1 pt

b) how much of the water was left over? Give your answer in litres

Accepted answers:

✓ 7/16

Question Type: Free Text
Date Added: Thu 21st Oct 2021
Last Modified: N/A
QID#: 29,409,667

[↗ Answers](#) | [✎ Edit](#) | [📄 Duplicate](#) | [📌 Used In](#) | [⬇️ Reorder](#)

[Remove From Test](#)

Question 37

Primary 6 Math » Primary 6 Math (Prelim)

1 pt

At a shop, Alice paid \$15.60 for a chocolate cake and 5 curry puffs. Ben paid \$26.45 for a chocolate cake and 12 curry puffs. Find the cost of 1 chocolate cake.

Accepted answers:

✓ \$7.85

✓ \$ 7.85

✓ 7.85

Question Type: Free Text
Date Added: Thu 21st Oct 2021
Last Modified: N/A
QID#: 29,409,688

Correctly answered feedback

Curry puff -> $26.45 - 15.60 = 10.85$
-> $10.85 \div 7 = 1.55$
5 curry puff -> $1.55 \times 5 = 7.75$
chocolate cake - > $15.6 - 7.75 = 7.85$

Incorrectly answered feedback

Curry puff -> $26.45 - 15.60 = 10.85$
-> $10.85 \div 7 = 1.55$
5 curry puff -> $1.55 \times 5 = 7.75$
chocolate cake - > $15.6 - 7.75 = 7.85$

[Answers](#) | [Edit](#) | [Duplicate](#) | [Used In](#) | [Reorder](#)

[Remove From Test](#)

Question 38

Primary 6 Math » Primary 6 Math (Prelim)

1 pt

Use all the digits 6,2,3 to form the number
a) ____ minutes are smaller than 4 hours

Accepted answers:

✓ 236

Question Type: Free Text
Date Added: Thu 21st Oct 2021
Last Modified: N/A
QID#: 29,409,698

[Answers](#) | [Edit](#) | [Duplicate](#) | [Used In](#) | [Reorder](#)

[Remove From Test](#)

Question 39

Primary 6 Math » Primary 6 Math (Prelim)

1 pt

b) ____ minutes are closest to 5 hours

Accepted answers:

✓ 326

Question Type: Free Text
Date Added: Thu 21st Oct 2021
Last Modified: N/A
QID#: 29,409,701

[Answers](#) | [Edit](#) | [Duplicate](#) | [Used In](#) | [Reorder](#)

[Remove From Test](#)

Question 40

Primary 6 Math » Primary 6 Math (Prelim)

1 pt

A baker had a total of 425 tarts and cupcakes. After selling an equal number of both types, he had $\frac{1}{3}$ of the tarts and $\frac{1}{4}$ of the cupcakes left. What was the total number of tarts and cupcakes left?

Accepted answers:

✓ 125

Question Type: Free Text
Date Added: Thu 21st Oct 2021
Last Modified: N/A
QID#: 29,409,709

[Answers](#) | [Edit](#) | [Duplicate](#) | [Used In](#) | [Reorder](#)[Remove From Test](#)

Question 41

Primary 6 Math » Primary 6 Math (Prelim)

1 pt

Tim had some books for sale. He sold some books on Saturday. On Sunday, he sold $\frac{1}{4}$ of the remainder. After the sale, the ratio of number of books sold to the number of books left was 8 : 5. What was ratio of the number of books sold on Saturday to the number of books sold on Sunday?

Accepted answers:

✓ 5

Question Type: Free Text
Date Added: Thu 21st Oct 2021
Last Modified: N/A
QID#: 29,409,715

Correctly answered feedback

$$\text{Sold (both days)} \rightarrow (\frac{3}{4} R \div 5) \times 8 = \frac{24}{20} R$$

$$\text{Sold sat} \rightarrow \frac{24}{20} R - \frac{1}{4} R = \frac{19}{20} R$$

$$\frac{1}{4} R = \frac{5}{20} R$$

ANS: 19 : 5

Incorrectly answered feedback

$$\text{Sold (both days)} \rightarrow (\frac{3}{4} R \div 5) \times 8 = \frac{24}{20} R$$

$$\text{Sold sat} \rightarrow \frac{24}{20} R - \frac{1}{4} R = \frac{19}{20} R$$

$$\frac{1}{4} R = \frac{5}{20} R$$

ANS: 19 : 5

[Answers](#) | [Edit](#) | [Duplicate](#) | [Used In](#) | [Reorder](#)

[Remove From Test](#)

Question 42

Primary 6 Math » Primary 6 Math (Prelim)

1 pt

Membership Promotion Coupon



Buy first laptop
at 20% discount



Buy second similar laptop
at 40% discount

For Non-members, 15% discount for each laptop.

Using the membership promotion coupon, Sue paid \$2940 for 2 similar laptops. How much would she have paid for 1 such laptop if she was not a member?

Accepted answers:

- ✓ \$1785
- ✓ \$ 1785
- ✓ 1785

Question Type: Free Text
Date Added: Thu 21st Oct 2021
Last Modified: N/A
QID#: 29,409,721

Correctly answered feedback

$$100\% \rightarrow 4200 \div 2 = 2100$$

$$100 - 15 = 85$$

$$85\% \rightarrow \frac{2100}{100} \times 85 = \$1785$$

Incorrectly answered feedback

$$100\% \rightarrow 4200 \div 2 = 2100$$

$$100 - 15 = 85$$

$$85\% \rightarrow \frac{2100}{100} \times 85 = \$1785$$

[Answers](#) | [Edit](#) | [Duplicate](#) | [Used In](#) | [Reorder](#)

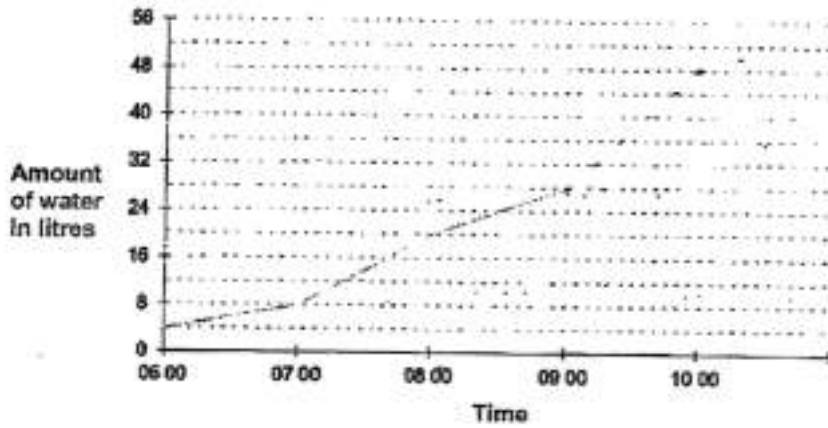
[Remove From Test](#)

Question 43

Primary 6 Math » Primary 6 Math (Prelim)

0 pts

1 A tank was partially filled with water at first. A tap was turned on from 06 00, and the tank was completely filled to 48 litres at 10 00. A line graph, showing the volume of water in the tank at regular intervals of time was drawn up as shown below. However, the line graph only shows the readings from 06 00 to 09 00.

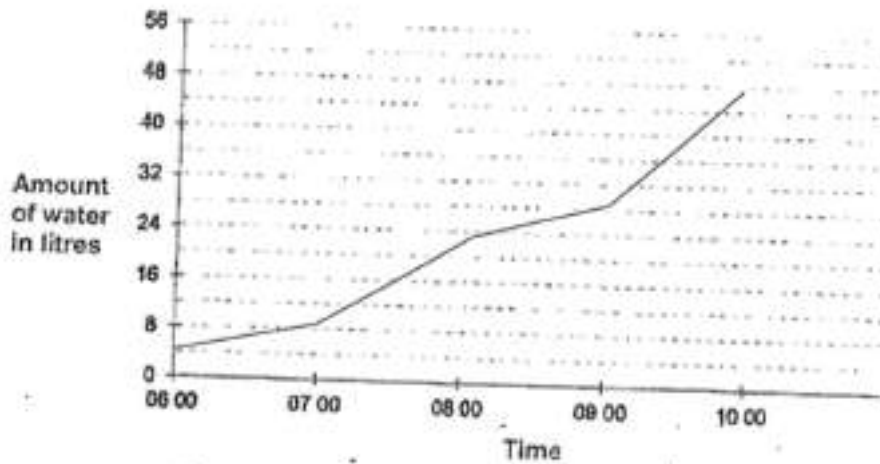


(a) Complete the line graph from the 09 00 to 10 00 with a straight line.

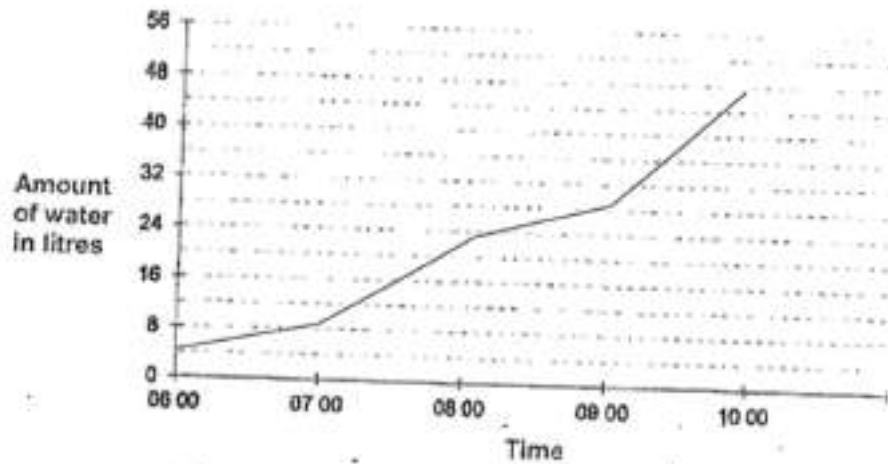
[1]

Question Type: Essay
Date Added: Thu 21st Oct 2021
Last Modified: N/A
QID#: 29,409,733

Correctly answered feedback



Incorrectly answered feedback



[Answers](#) |
 [Edit](#) |
 [Duplicate](#) |
 [Used In](#) |
 [Reorder](#)

[Remove From Test](#)

Question 44

Primary 6 Math » Primary 6 Math (Prelim)

1 pt

What fraction of the tank was filled with water at first? Express your answer as a fraction in its simplest form.

Accepted answers:

✓ 1/12

Question Type: Free Text
Date Added: Thu 21st Oct 2021
Last Modified: Thu 21st Oct 2021
QID#: 29,409,741

Correctly answered feedback

$4/48 = 1/12$

Incorrectly answered feedback

$4/48 = 1/12$

[Answers](#) |
 [Edit](#) |
 [Duplicate](#) |
 [Used In](#) |
 [Reorder](#)

[Remove From Test](#)

Question 45

Primary 6 Math » Primary 6 Math (Prelim)

1 pt

b) What was the percentage increase in the amount of water in the tank from 08 00 to 09 00?

Accepted answers:

✓ 40%

✓ 40 %

✓ 40

Question Type: Free Text
Date Added: Thu 21st Oct 2021
Last Modified: N/A
QID#: 29,409,757

Correctly answered feedback

diff -> $28-20=8$
 $\% = 8/20 \times 100\% = 40$

Incorrectly answered feedback

diff -> $28-20=8$
 $\% = 8/20 \times 100\% = 40$

↗ Answers | ✎ Edit | 📄 Duplicate | ↶ Used In | ⚡ Reorder

Remove From Test

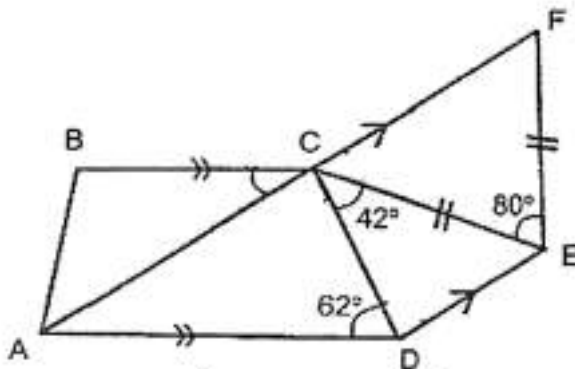
Question 46

Primary 6 Math » Primary 6 Math (Prelim)

1 pt

In the figure below, ABCD and AFED are trapeziums, $CE = EF$, $\angle ADC = 62^\circ$, $\angle DCE = 42^\circ$ and $\angle CEF = 80^\circ$.

(a) Find $\angle ACD$.



Accepted answers:

✓ 88

Question Type: Free Text
Date Added: Thu 21st Oct 2021
Last Modified: N/A
QID#: 29,409,771

Correctly answered feedbackFCE -> $(180-80)\div 2=50$ ACD -> $180-50-42=88$ **Incorrectly answered feedback**FCE -> $(180-80)\div 2=50$ ACD -> $180-50-42=88$ [Answers](#) | [Edit](#) | [Duplicate](#) | [Used In](#) | [Reorder](#)[Remove From Test](#)**Question 47**

Primary 6 Math » Primary 6 Math (Prelim)

1 pt

b) Find ACB

Accepted answers:

✓ 30

Question Type: Free Text**Date Added:** Thu 21st Oct 2021**Last Modified:** N/A**QID#:** 29,409,777**Correctly answered feedback**CAD -> $180-88-62=30$

ACB -> 30

Incorrectly answered feedbackCAD -> $180-88-62=30$

ACB -> 30

[Answers](#) | [Edit](#) | [Duplicate](#) | [Used In](#) | [Reorder](#)[Remove From Test](#)**Question 48**

Primary 6 Math » Primary 6 Math (Prelim)

1 pt

Peter claims the CD is perpendicular to DE. Do you agree with Peter?

A. Yes

✓ B. No

Question Type: Multiple Choice**Randomize Answers:** No**Date Added:** Thu 21st Oct 2021**Last Modified:** N/A**QID#:** 29,409,787

[Answers](#) |
 [Edit](#) |
 [Duplicate](#) |
 [Used In](#) |
 [Reorder](#)

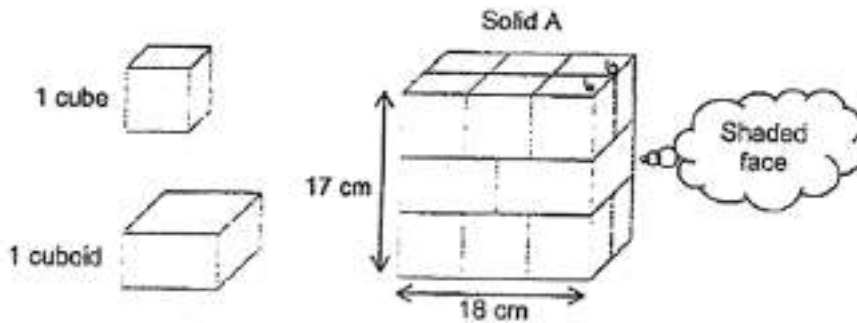
[Remove From Test](#)

Question 49

Primary 6 Math » Primary 6 Math (Prelim)

1 pt

Solid A is glued together using 2 similar cuboids and 12 identical cubes as shown.



(a) Find the total area of the shaded face as shown.

Accepted answers:

- ✓ 204cm²
- ✓ 204 cm²
- ✓ 204

Question Type: Free Text
Date Added: Thu 21st Oct 2021
Last Modified: N/A
QID#: 29,409,796

Correctly answered feedback

$18 \div 3 = 26$
 width = $6 \times 2 = 12$
 shaded $12 \times 17 = 204$

Incorrectly answered feedback

$18 \div 3 = 26$
 width = $6 \times 2 = 12$
 shaded $12 \times 17 = 204$

[Answers](#) |
 [Edit](#) |
 [Duplicate](#) |
 [Used In](#) |
 [Reorder](#)

[Remove From Test](#)

Question 50

Primary 6 Math » Primary 6 Math (Prelim)

1 pt

b) Find the volume of 1 cuboid.

Accepted answers:

- ✓ 540cm²
- ✓ 540 cm²
- ✓ 540

Question Type: Free Text

Date Added: Thu 21st Oct 2021

Last Modified: N/A

QID#: 29,409,811

Correctly answered feedback

height cuboid -> $17-6-6=5$

length cuboid -> $18\div 2=9$

vol cuboid -> $9\times 5\times 12=540$

Incorrectly answered feedback

height cuboid -> $17-6-6=5$

length cuboid -> $18\div 2=9$

vol cuboid -> $9\times 5\times 12=540$

[Answers](#) |
 [Edit](#) |
 [Duplicate](#) |
 [Used In](#) |
 [Reorder](#)

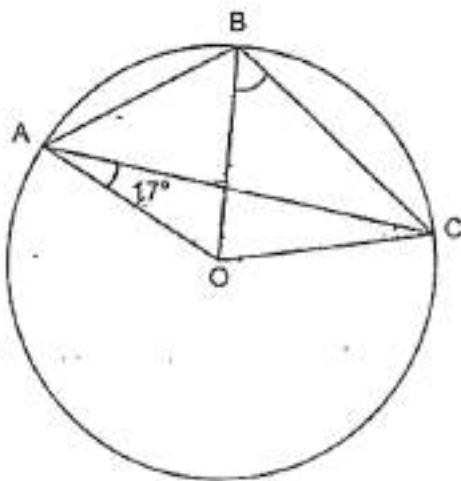
[Remove From Test](#)

Question 51

Primary 6 Math » Primary 6 Math (Prelim)

1 pt

In the figure below, O is the centre of the circle. OAC, OAB and OBC are triangles, $AB = AO$ and $\angle OAC = 17^\circ$.



(a) Name an equilateral triangle in the given figure.

Accepted answers:

oab



Question Type: Free Text
Date Added: Thu 21st Oct 2021
Last Modified: N/A
QID#: 29,409,817

[Answers](#) | [Edit](#) | [Duplicate](#) | [Used In](#) | [Reorder](#)

[Remove From Test](#)

Question 52

Primary 6 Math » Primary 6 Math (Prelim)

1 pt

b) Find OBC

Accepted answers:

47

Question Type: Free Text
Date Added: Thu 21st Oct 2021
Last Modified: N/A
QID#: 29,409,829

Correctly answered feedback

AFO -> $180 - 17 - 60 = 103$
 BFC -> 103
 AOC -> $180 - 17 - 17 = 146$
 FOC -> $146 - 60 = 86$
 OBC -> $(180 - 86) / 2 = 47$

Incorrectly answered feedback

AFO -> $180 - 17 - 60 = 103$
 BFC -> 103
 AOC -> $180 - 17 - 17 = 146$
 FOC -> $146 - 60 = 86$
 OBC -> $(180 - 86) / 2 = 47$

[Answers](#) | [Edit](#) | [Duplicate](#) | [Used In](#) | [Reorder](#)

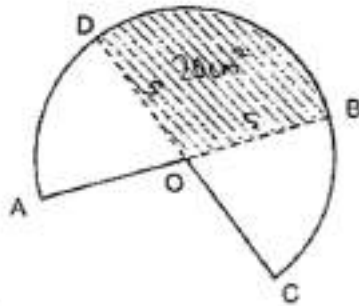
[Remove From Test](#)

Question 53

Primary 6 Math » Primary 6 Math (Prelim)

1 pt

The figure is formed by 2 identical semicircles overlapping each other. The radius of each semicircle is 5 cm. O is the centre of both semicircles. AOB and COD are the diameters. The area of the shaded part OBD is 20 cm^2 and the perimeter of the shaded part OBD is 18 cm.



- (a) Using the calculator value of π , find the area of the figure. Correct your answer to 2 decimal places.

Accepted answers:

- ✓ 58.54cm²
- ✓ 58.54 cm²
- ✓ 58.54

Question Type: Free Text
Date Added: Thu 21st Oct 2021
Last Modified: N/A
QID#: 29,409,839

[↶ Answers](#) | [✎ Edit](#) | [📄 Duplicate](#) | [📌 Used In](#) | [⬇️ Reorder](#)

[Remove From Test](#)

Question 54

Primary 6 Math » Primary 6 Math (Prelim)

1 pt

- (b) Using $\pi = \frac{22}{7}$, find the perimeter of the figure. Give your answer as a mixed number in the simplest form.

Accepted answers:

- ✓ 33 $\frac{3}{7}$ cm
- ✓ 33 $\frac{3}{7}$ cm
- ✓ 33 $\frac{3}{7}$

Question Type: Free Text
Date Added: Thu 21st Oct 2021
Last Modified: N/A
QID#: 29,409,855

Correctly answered feedback

$$\begin{aligned} \text{b) } BD &\rightarrow 18 - 5 - 5 = 8 \\ 2 \times \frac{1}{2} \times \frac{22}{7} \times 10 &= 33\frac{3}{7} \text{ cm} \end{aligned}$$

Incorrectly answered feedback

$$\begin{aligned} \text{b) } BD &\rightarrow 18 - 5 - 5 = 8 \\ 2 \times \frac{1}{2} \times \frac{22}{7} \times 10 &= 33\frac{3}{7} \text{ cm} \end{aligned}$$

[↗ Answers](#) | [✎ Edit](#) | [📄 Duplicate](#) | [↶ Used In](#) | [⬇ Reorder](#)

[Remove From Test](#)

Question 55

Primary 6 Math » Primary 6 Math (Prelim)

1 pt

At first, Ben had some red, blue and green marbles. During a game, he removed 54 red marbles, gave away 40% of the blue marbles and increased the green marbles by 25%. After the game, the ratio of the number of red marbles to the number of blue marbles to the number of green marbles was 3 : 1 : 5. The total number of marbles he had before and after the game was the same.

(a) What fraction of the marbles were red at first?

Accepted answers:

✓ 10/27

Question Type: Free Text
Date Added: Thu 21st Oct 2021
Last Modified: N/A
QID#: 29,409,859

[↗ Answers](#) | [✎ Edit](#) | [📄 Duplicate](#) | [↶ Used In](#) | [⬇ Reorder](#)

[Remove From Test](#)

Question 56

Primary 6 Math » Primary 6 Math (Prelim)

1 pt

b) How many green marbles had he increased during the game?

Accepted answers:

✓ 162

Question Type: Free Text
Date Added: Thu 21st Oct 2021
Last Modified: N/A
QID#: 29,409,865

[Answers](#) |
 [Edit](#) |
 [Duplicate](#) |
 [Used In](#) |
 [Reorder](#)

[Remove From Test](#)

Question 57

Primary 6 Math » Primary 6 Math (Prelim)

1 pt

Farid used circles to form figures that follow a pattern. The first 4 figures are shown below.



Figure 1



Figure 2



Figure 3



Figure 4

- (a) The table below shows the number of circles used for each figure. Complete the table for Figure 5 and Figure 6.

Figure Number	Number of circles used
1	13
2	18
3	21
4	26
5	
6	

[1]

Accepted answers:

✓ 34

Question Type: Free Text
Date Added: Thu 21st Oct 2021
Last Modified: N/A
QID#: 29,409,874

Correctly answered feedback

26+3=29
 29+5=34

Incorrectly answered feedback

26+3=29
29+5=34

[Answers](#) | [Edit](#) | [Duplicate](#) | [Used In](#) | [Reorder](#)

[Remove From Test](#)

Question 58

Primary 6 Math » Primary 6 Math (Prelim)

1 pt

b) What is the difference in the number of circles Farid would use for Figure 10 and Figure 12?

Accepted answers:

✓ 8

Question Type: Free Text
Date Added: Thu 21st Oct 2021
Last Modified: N/A
QID#: 29,409,882

Correctly answered feedback

3+5=8

Incorrectly answered feedback

3+5=8

[Answers](#) | [Edit](#) | [Duplicate](#) | [Used In](#) | [Reorder](#)

[Remove From Test](#)

Question 59

Primary 6 Math » Primary 6 Math (Prelim)

1 pt

c) How many circles would he use for Figure 41?

Accepted answers:

✓ 173

Question Type: Free Text
Date Added: Thu 21st Oct 2021
Last Modified: N/A
QID#: 29,409,888

Correctly answered feedback

41÷2= 20 R0.5
(20x0.5) + (20x3) +13 = 173

Incorrectly answered feedback

41÷2= 20 R0.5
(20x0.5) + (20x3) +13 = 173

[Answers](#) | [Edit](#) | [Duplicate](#) | [Used In](#) | [Reorder](#)

[Remove From Test](#)

www.classmarker.com